



ASX Release

20 December 2010

**VOYAGER RESOURCES
LIMITED**
ACN 076 390 451
Level 1 / 33 Richardson Street
WEST PERTH
Australia

Tel: +61 8 9200 6264
Fax: +61 8 9200 4469

Contact:
Kell Nielsen
(Managing Director)

E-mail:
info@voyagerresources.net

Directors / Officers:

Matthew Wood
Kell Nielsen
George Tumur
Timothy Flavel
Nick Lindsay

Issued Capital:

Approximately 675.3 million
shares

Approximately 320.3 million
Options

ASX Symbols: VOR, VORO

Media:

Fortbridge + 61 2 9331 0655
Bill Kemmery + 61 400 122 449

Drilling has Commenced at the Khongor Copper Gold Project in Mongolia

Voyager Resources Limited is pleased to announce that it has commenced diamond core drilling at its 100% owned Khongor Copper Gold Porphyry Project located in the World Class Oyu Tolgoi Copper Belt of the South Gobi Province of Mongolia.

The initial programme is designed to delineate the geometry and nature of high grade copper gold mineralisation previously intersected in surface sampling and to further test the identified Induced Polarisation anomaly. Highlights of Khongor copper gold project, include:

- **Khongor is located in the South Gobi Arc Terrain that hosts the World Class Oyu Tolgoi Copper Gold Deposit.**
- **Khongor has a mineralised strike length of +1 kilometre from geological mapping and sampling that is broadly coincidental with a large Induced Polarisation chargeability anomaly that extends for +1,600 by 380 metres.**
- **Previous drilling has intersected extensive zones of mineralisation in diamond core drilling, including:**
 - **50 metres at 1.0% copper and 0.3 g/t gold from 64 metres (KPDH09)**
 - **70.3 metres at 0.7% copper and 0.2 g/t gold from surface (KPDH03)**
- **Diamond core drilling has also intersected high grade structurally controlled quartz stockwork, that has returned:**
 - **5 metres at 2.6% copper and 0.87 g/t gold from 44 metres (KPDH07)**
 - **14.1 metres at 2.4% copper and 0.64 g/t gold from 69.9 metres (KPDH09)**
 - **9 metres at 2.8% copper and 0.68 g/t gold from 53.3 metres (KPDH13)**
- **Extensive oxide copper gold mineralisation has been identified at surface in trenching, results include:**
 - **18 metres at 1.33% copper and 0.32 g/t gold (Line 2)**
 - **18 metres at 1.84% copper and 0.43 g/t gold (Line 3)**
- **Voyager has an Exploration Target* for Khongor of 100Mt to 200Mt at 0.7% to 1.0% copper**

Quartz-chalcopyrite veining in diamond drill core (KPDH04 42-43m)



Diamond drill core from high grade quartz chalcopyrite stockwork veining (KPDH13 57-62m)



Khongor comprises a large Induced Polarisation (IP) chargeability anomaly that extends for 1,600 metres by 380 metres that is broadly coincident with mapped copper mineralisation, porphyry style alteration and porphyry dykes. Geological mapping and drilling has indicated that Khongor is geologically similar to the World Class Oyu Tolgoi Copper Gold Deposit that is situated in the same geological terrain approximately 320 kilometres east of Khongor and has a stated Canadian NI 43-101 resource of:

3.75 billion tonnes at 0.98% copper and 0.38 g/t gold in the Measured, Indicated and Inferred categories**

The Khongor Copper Gold Project was previously trenched in 2005 with 5 trench lines being completed for 277 metres. Trenches were set out over 350 metres across five areas of outcropping mineralisation. Trenching returned excellent results, including:

- **18 metres at 1.33% copper and 0.32 g/t gold (Line2)**
- **18 metres at 1.84% copper and 0.43 g/t gold (Line3)**

Initial drilling conducted over the trenched area intersected broad zones of copper gold mineralisation, including:

- **50 metres at 1.0% copper and 0.3 g/t gold from 64 metres (KPDH09)**
- **70.3 metres at 0.7% copper and 0.2 g/t gold from surface (KPDH03)**

Drilling has also intersected high grade copper gold mineralisation associated with structurally controlled quartz chalcopyrite stockwork veining, these results include:

- **5 metres at 2.6% copper and 0.87 g/t gold from 44 metres (KPDH07)**
- **14.1 metres at 2.4% copper and 0.64 g/t gold from 69.9 metres (KPDH09)**
- **9 metres at 2.8% copper and 0.68 g/t gold from 53.3 metres (KPDH13)**

The Khongor copper gold mineralisation occurs within a two kilometre belt of altered and variably mineralised hornfels and monzodiorite related feldspar porphyry intrusions. A central core of localised sheeted and stockworked quartz chalcopyrite veining has been intersected in drilling. The setting and style of mineralisation can be compared to the giant Cadia Ridgeway system in New South Wales and the giant Oyu Tolgoi system in Mongolia.

Drilling is expected to continue through the remainder of 2010 and well into January in the new year, with initial assay results expected late January.

In addition to the drilling ongoing field reconnaissance has identified additional copper carbonate outcrops not previously mapped and plans are now under way to commence a large surface geochemical project to further identify mineralised areas for further trenching and drilling.

The Khongor Copper Gold Project is an outstanding growth opportunity for Voyager Resources. Khongor is located in the World Class Oyu Tolgoi Copper Belt of the South Gobi Province of Mongolia and with further exploration has the potential to be a Company making project for Voyager. The commencement of drilling programmes is the first phase of an aggressive exploration programme that will include additional drilling, soil geochemical and geophysical surveys.

Kell Nielsen
Managing Director

Competent Persons Statement

Mr Nielsen is a Member of the Australian Institute of Mining and Metallurgy and has sufficient experience which is relevant to the style of mineralisation and type of deposit under consideration and to the activity which he is undertaking to qualify as a Competent Person as defined in the 2004 Edition of the 'Australasian Code for Reporting of Exploration Results, Mineral Resources and Ore Reserves'. Mr Nielsen is the Managing Director of Voyager Resources Limited and consents to the inclusion in this release of the matters based on his information and information presented to him in the form and context in which it appears.

Exploration Target Statement

*This work has not resulted in the definition of any resource which is compliant with the JORC Code but has identified an Exploration Target. With further exploration, this target has potential for between 100Mt to 200Mt of mineralisation at a grade of 0.7 to 1.0% copper within the drilled and surrounding area. The potential quantity and grade is conceptual in nature and there has been insufficient exploration to define a Mineral Resource in accordance to the JORC Code. As such it is uncertain if further exploration will result in the determination of a Mineral Resource. Further Voyager Resources cautions that in order to achieve this target, substantial exploration is required to further geologically map, detect, trench and drill test the defined conceptual target. On this basis, Voyager Resources considers that further work is warranted beyond that previously conducted.

Note on Oyu Tolgoi Resource Statement

**The resource quoted for the Oyu Tolgoi copper gold development was referenced from Table 1.4.1 "Oyu Tolgoi Mineral Resource Summary, 31st March 2010" from the report labelled "Oyu Tolgoi Technical Report June 2010" by AMEC Minproc and was released by Ivanhoe Mines Limited on the 7th June 2010.

Khongor Project Location

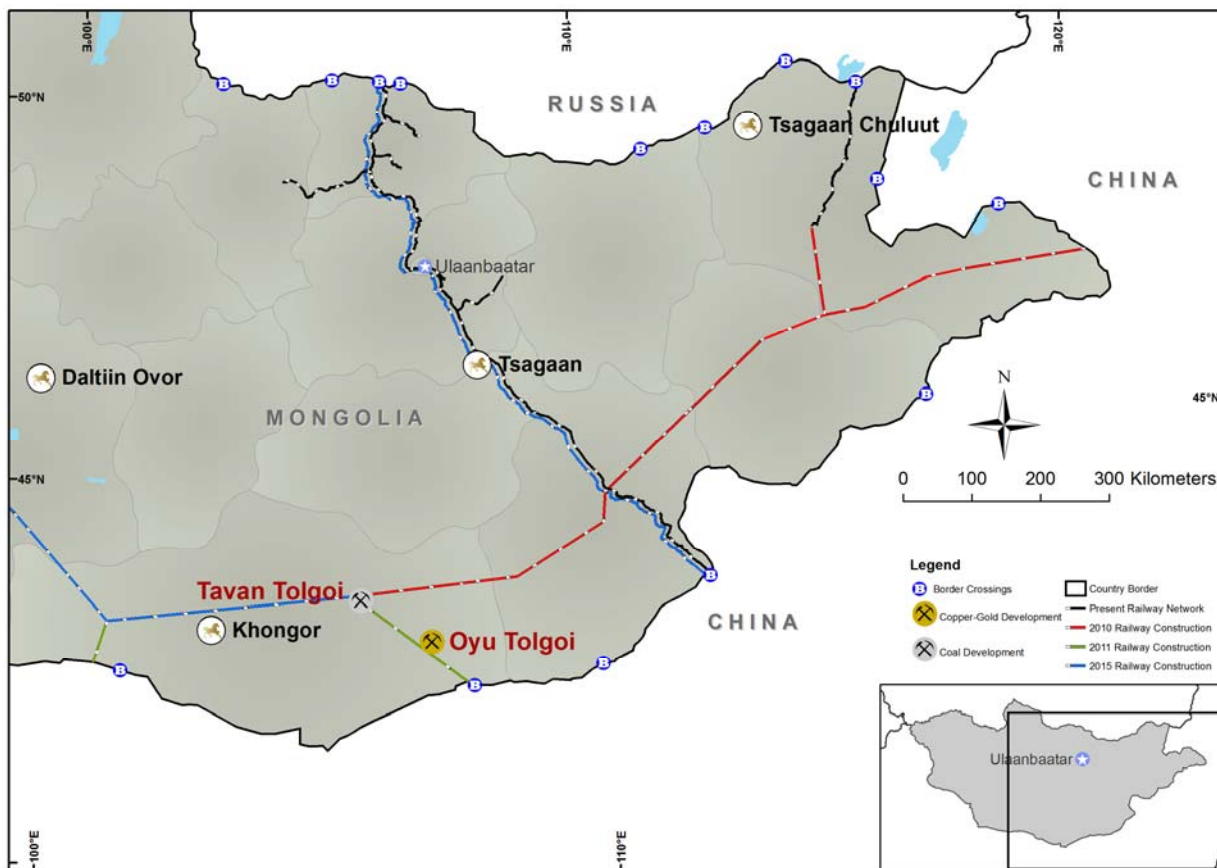
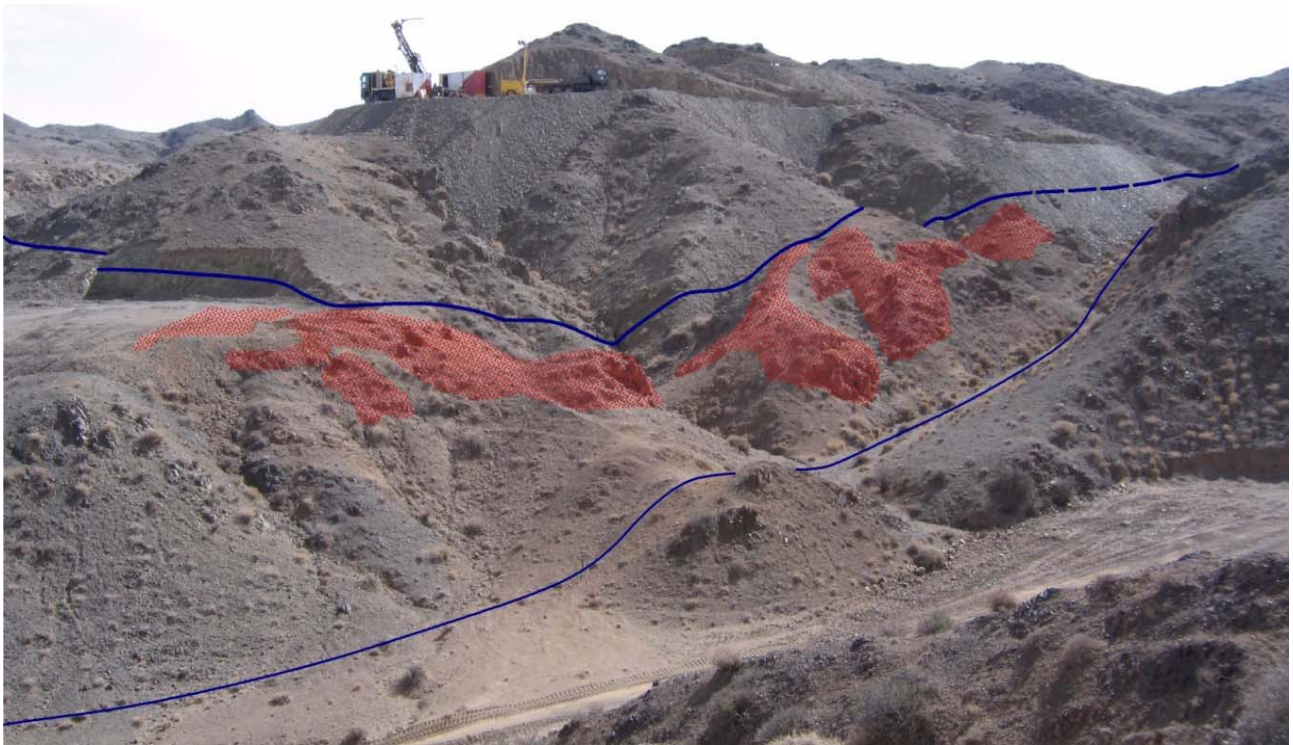


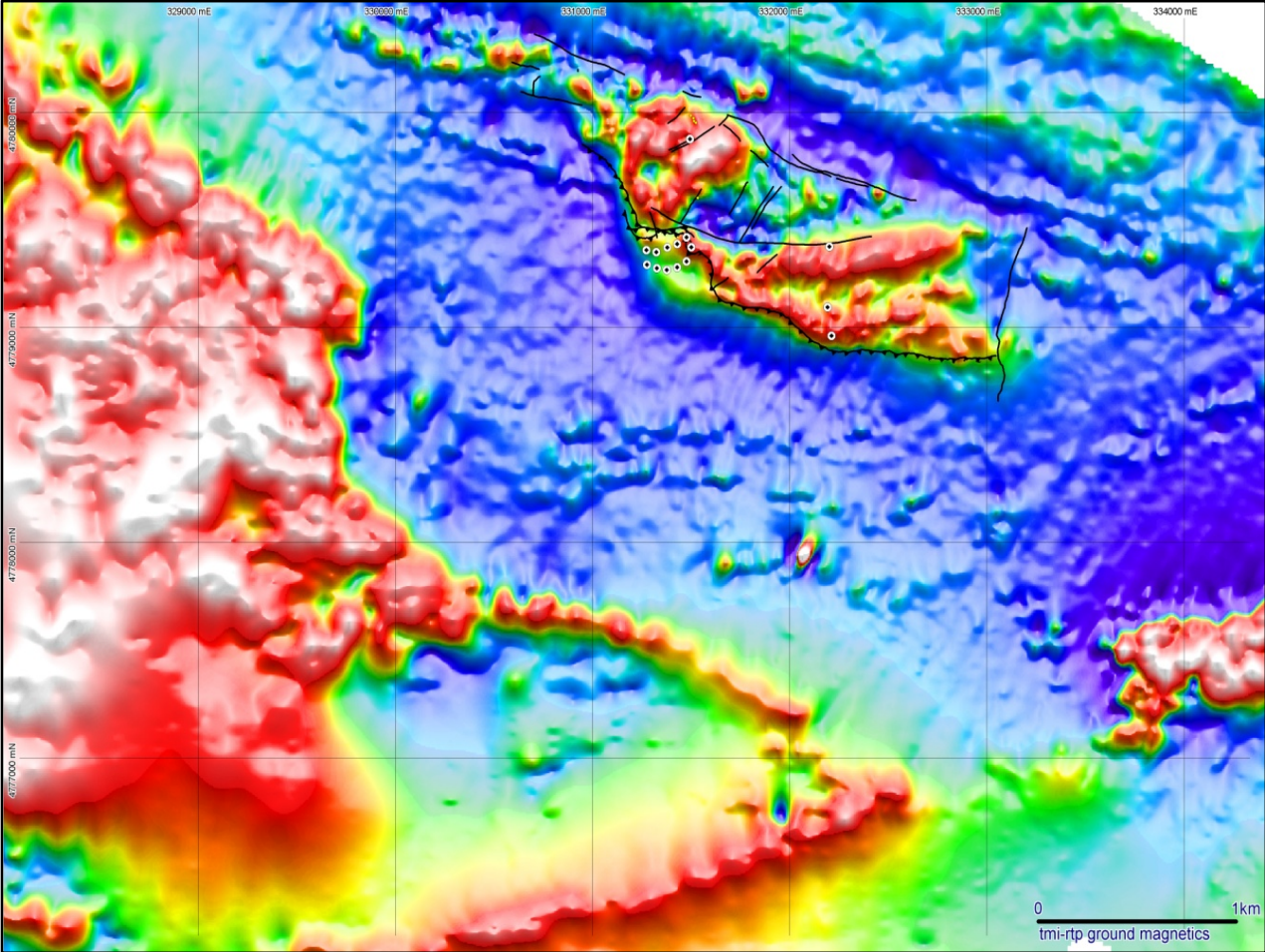
Table 1 *Khongor Project Drilling Results*

Project	Argalant	Depth	Type	East	North	Dip/Azim	Assay Results					Comments
							From	To	Interval	Cu (%)	Au (g/t)	
Khongor Main Zone Drilling	KPDH03	110.5	DDH	331,473	4,779,419	-45 / 330	0.00	70.30	70.30	0.67	0.16	
	<i>Including</i>						9.10	31.00	21.90	1.77	0.45	
	<i>Including</i>						17.20	28.00	10.80	2.33	0.63	
	KPDH04	108.3	DDH	331,474	4,779,420	-81 / 325	8.60	100.30	91.70	0.30	0.08	
	<i>Including</i>						8.60	19.00	10.40	0.94	0.17	
	KPDH05	245.6	DDH	331,504	4,779,372	-45 / 150	2.70	110.50	107.80	0.15	0.03	
	KPDH06	209.5	DDH	331,428	4,779,390	-50 / 360	43.20	104.00	60.80	0.39	0.11	
	<i>Including</i>						55.00	57.85	2.85	1.21	0.35	
	<i>and</i>						82.00	102.00	20.00	0.73	0.22	
	<i>Including</i>						84.00	92.00	8.00	0.98	0.28	
	KPDH07	201.0	DDH	331,428	4,779,390	-80 / 360	41.00	141.00	100.00	0.29	0.07	
	<i>Including</i>						42.00	69.00	27.00	0.74	0.21	
	<i>Including</i>						44.00	49.00	5.00	2.64	0.87	
	KPDH08	249.0	DDH	331,379	4,779,372	-60 / 360	56.70	118.00	61.30	0.34	0.11	
	<i>Including</i>						75.70	103.00	27.30	0.63	0.22	
	<i>Including</i>						75.70	85.00	9.30	1.05	0.40	
	KPDH09	219.1	DDH	331,379	4,779,372	-90 / 360	64.00	114.00	50.00	1.00	0.30	
	<i>Including</i>						69.90	84.00	14.10	2.38	0.64	
KPDH10	266.5	DDH	331,428	4,779,280	-50 / 360	63.90	236.90	173.00	0.22	0.05		
<i>Including</i>						74.60	108.50	33.90	0.69	0.19		
KPDH11	299.8	DDH	331,375	4,779,268	-60 / 360	98.60	184.00	85.40	0.10	0.03		
KPDH12	279.8	DDH	331,325	4,779,276	-50 / 360	75.20	121.10	45.90	0.25	0.06		
KPDH13	97.5	DDH	331,325	4,779,350	-50 / 360	53.30	97.50	44.20	0.77	0.19	<i>End of Hole</i>	
<i>Including</i>						53.30	62.30	9.00	2.77	0.68		
<i>Including</i>						57.00	62.00	5.00	3.44	0.83		
KPDH14	158.7	DDH	331,275	4,779,360	-60 / 360	59.30	113.70	54.40	0.24	0.04		
<i>Including</i>						68.45	74.50	6.05	1.32	0.16		
KPDH15	158.6	DDH	331,475	4,779,320	-50 / 360	45.00	96.40	51.40	0.22	0.03		
KPDH18	212.8	DDH	331,275	4,779,290	-60 / 360	68.00	83.80	15.80	0.14	0.05		

Khongor Project – Outcropping stockwork veining (coloured red)



Khongor Project – Ground magnetic anomaly & drill collar locations



Khongor Project – IP chargeability anomaly & drill collar locations

